

## NAF1000 FIXED SPLICE CABINET INSTALLATION INSTRUCTIONS

- Bring in the cable from the opening at the top. It is on the right side when looking from the front.

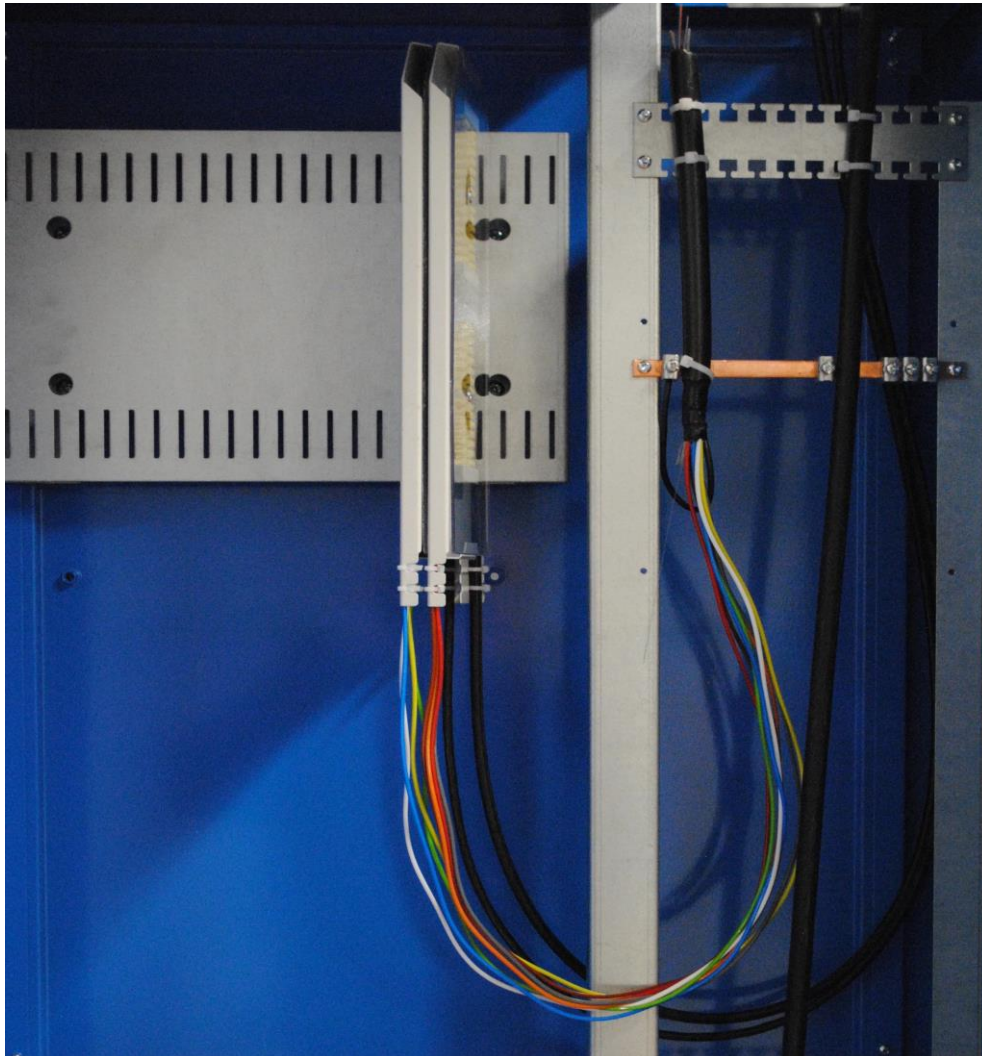


**Naficon Liitin Oy**

Lahdentie 7 D, 21660 NAUVO

[www.naficon.fi](http://www.naficon.fi)

- Begin the installation of splice trays from the top splice tray holder. Leave the first three slots empty as they are reserved for possible direct extensions. Fasten the cable to the left side of the mounting bracket. Install possible grounding at the same time to the grounding bar.



**Naficon Liitin Oy**

Lahdentie 7 D, 21660 NAUVO  
[www.naficon.fi](http://www.naficon.fi)

- Fill the splice trays to the left and bring the new cables to the right. When the top splice tray holder is full, move on to the middle one and repeat the process. Leave the first three slots empty again. The same applies to the bottom splice tray holder.
- Attach the outgoing micro cables to the mounting bar on the ceiling of the cabinet. Start with the rearmost bar.



**Naficon Liitin Oy**

Lahdentie 7 D, 21660 NAUVO  
[www.naficon.fi](http://www.naficon.fi)