

NAFICON

***Ready assembled
cables***



Naficon was established in 1994 and is specialized in products for Passive Optic Networks (PON). Naficon is located in Nauvo, in the archipelago of Turku. Over the past three decades we have established ourselves as one of the leading operators on the field of end-products for optical fiber networks in Finland. Quality, flexibility and understanding are the three words that describe best the way we operate. Using high-class materials, the newest production equipment and continuous development of skills are the reasons for maintaining good quality year in and year out.



In July 2015 we founded subsidiary in Dubai, United Arab Emirates. The name of the company is NFOM (Naficon Fiber Optic Manufacturing) LLC. NFOM manufactures similar products as we do in Finland using the same materials and production equipment. Certain products, like trunk cables for mobile masts and other cell sites, are still made from start to finish in Nauvo. The production in NFOM started in February 2016. In April 2017 NFOM quality management system got ISO 9001 quality certification.



As said our manufacturing plant in Finland is in Nauvo. We manufacture pigtailed, patch cords and multifiber cables with connectors ready-made. Used cables are for indoor and outdoor applications according to customer needs. Beside those products we manufacture pre-terminated fiber panels for different purposes.



Besides comprehensive stock of our own products, we have all the essential PON products in stock. Adapters, splice protector sleeves, attenuators, splitters, CWDM etc. We have thousands of products in stock so even bigger deliveries within a day can be made.

We manufacture products with all the most common connectors: SC, LC, FC and ST. All of them can be polished with UPC (no angle) and SC, LC and FC connectors are available as APC connectors. APC connectors feature fiber end face that is polished at an 8-degree angle. Other ready-made connectors, such as MTP/MPO and E2000, can be supplied via our partners.

Flexibility, quality and understanding

- three words that describe Naficon's products and operations

Ready assembled cables

Ready assembled cable means multifiber cable, in which we manufacture connectors on one or both ends. The connectors we offer in these types of cables are as follows: UPC (SC, LC, FC and ST) and APC (SC, LC and FC). The connectors may be different on each end. It's also possible to have different connectors on the same end.

The use of ready assembled cables speeds up installation process considerably. This saves installation costs and frees up resources for different locations. The installation of these products doesn't require specialized training or know-how.

The cables can be both indoor and outdoor cables. Even big and long cables can be ready assembled. Commonly ready assembled cables are made from indoor-/outdoor cables.

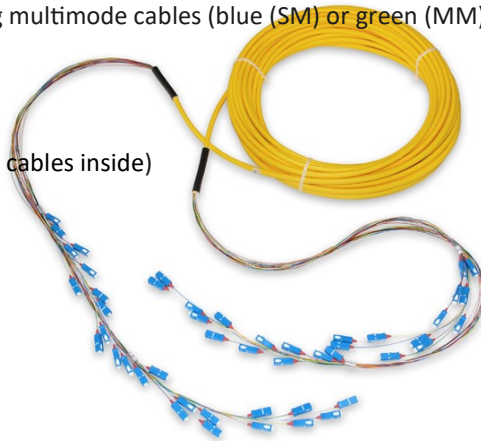
Most commonly used cables:

- HBBX 12-, 24-, 48- ja 96SML (HBBX stands for thin black indoor-/outdoor cable, SM, 250µm fibers)
- FZOMSU-SD/FXMSU/FZMSU 12-, 24-, 48-, 96-, ja 192SML (orange indoor-/outdoor cable, SM, 250µm fibers)
- FXMMS 2-, 4-, 6- ja 8SMT and corresponding multimode cables (blue (SM) or green (MM) 2mm simplex cables inside

Ready assembled cables

according to needs)

- FMMS 4-, 6-, 8-, 12- ja 24SMT (2mm simplex cables inside)
- Flex cables
- Direct buried cables



The number of fibers ranges from 2 to 288. Cables can be solely either SM or MM. But it's also possible to have so called hybrid cables, in which there are SM fibers and MM fibers in the same cable.

List of commonly used hybrid cables:

- 4SML+4OM3L or 4OM1L
- 8SML+8OM3L or 8OM1L
- 12SML+12OM3L or 12OM1L
- 24SML+24OM3L or 24OM1L

The length of ready assembled cable is specified by the customer. Also, the amount of peeling can be agreed according to needs. The peeled fibers are packed inside of a protective tube. The tube can be used in installation to pull the cable.

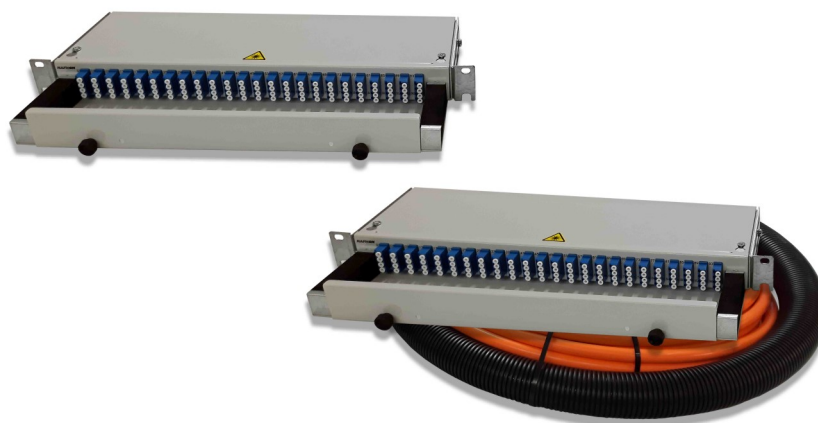
Ready assembled cables can be manufactured also in a way that one end has 900µm fibers and the other end has 2mm fibers. These kinds of products work exceptionally well when 900µm fibers are preassembled into a panel or other termination box, and the other end goes directly to transceiver or to external connections.



Very often, ready assembled cables are installed in our factory at one end into an enclosure, such as 19" panel, NAF1000, ODF 3x8 or 4x6 or LL YJT

When using a product like this another enclosure with adapters is often added to the delivery. Then the package is ready for installation at the site.

Unfortunately, there are not identification codes for all these kinds of products, because they are custom made according to the site. In the next couple of tables can be found the products that have their own identification codes.



Ready assembled cables

Product code	Product
7269357	PAN 19"/PAN 19" LC FZOMSU-SD 24SML 15m
7269358	PAN 19"/PAN 19" LC FZOMSU-SD 24SML 30m
7269359	PAN 19"/PAN 19" LC FZOMSU-SD 48SML 15m
7269360	PAN 19"/PAN 19" LC FZOMSU-SD 48SML 20m
7269361	PAN 19"/PAN 19" LC FZOMSU-SD 48SML 30m
7269362	PAN 19"/PAN 19" LC FZOMSU-SD 48SML 45m
7263260	PAN 19"/PAN 19" LC FZMSU 96SML 15m
7269363	PAN 19"/PAN 19" LC FZOMSU-SD 96SML 20m
7269364	PAN 19"/PAN 19" LC FZOMSU-SD 96SML 30m
7269365	PAN 19"/PAN 19" LC FZOMSU-SD 96SML 45m

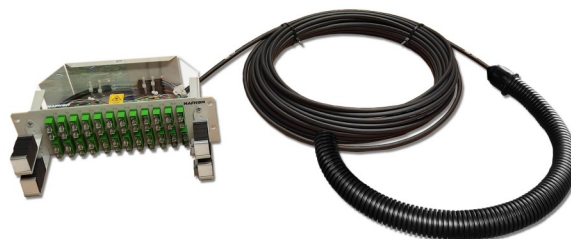


Product code	Product
7269350	LL/PAN19 LC FZOMSU-SD 24SML 15m
7269351	LL/PAN19 LC FZOMSU-SD 24SML 30m
7269352	LL/PAN19 LC FZOMSU-SD 24SML 50m
7263268	LL/PAN19 LC FZOMSU-SD 48SML 15m
7269353	LL/PAN19 LC FZOMSU-SD 48SML 20m
7263271	LL/PAN19 LC FZOMSU-SD 48SML 30m
7269354	LL/PAN19 LC FZOMSU-SD 48SML 50m
7269355	LL/PAN19 LC FZOMSU-SD 48SML 70m
7269303	LL/PAN19 LC FZOMSU-SD 96SML 15m
7269356	LL/PAN19 LC FZOMSU-SD 96SML 20m
7269304	LL/PAN19 LC FZOMSU-SD 96SML 30m

Ready assembled cables



Product code	Product
7269342	LL/LL YJT LC FZOMSU-SD 24SML 15m
7269343	LL/LL YJT LC FZOMSU-SD 24SML 30m
7269344	LL/LL YJT LC FZOMSU-SD 48SML 15m
7269345	LL/LL YJT LC FZOMSU-SD 48SML 30m
7269346	LL/LL YJT LC FZOMSU-SD 96SML 10m
7269347	LL/LL YJT LC FZOMSU-SD 96SML 15m
7269348	LL/LL YJT LC FZOMSU-SD 96SML 30m
7269349	LL/LL YJT LC FZOMSU-SD 96SML 50m



Product code	Product
7269497	NAF1000 SCA/SCA HBBX 48SML 20m
7269498	NAF1000 SCA/SCA HBBX 24SML 20m

Ready assembled cables

Here is an instruction how to place an order for these kinds of products:

- Panel or enclosure in which one end is installed
- The name of the panel or enclosure for the other end if necessary. It won't be installed unless requested
- The connectors for each end separated with / sign. If there are no connectors at the other end, then it should be marked with a dash
- The wanted type of cable. If the type of cable is unknown, then the number of fibers and the type of fibers should be mentioned and the length of the cable.

Here are a couple of examples:

PAN 19"/ODF 3X8 SCA/SC FZOMSU-SD 24SML 35m

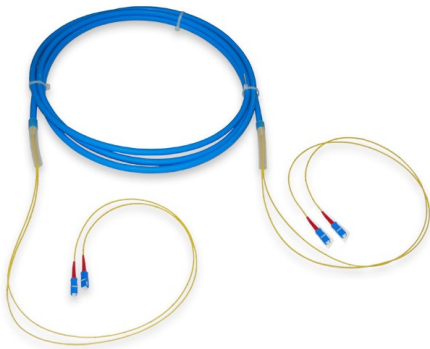
- One end of the ready assembled cable is installed into a 19" panel
- The other end is installed at the site into ODF 3x8 enclosure, so the enclosure with right adapters is delivered along with the cable
- The connectors installed into 19" panel are SC-APC
- The connectors for ODF 3x8 are SC-UPC and are inside a protective tube
- The cable is 24 fiber SM cable, it's orange and for indoor-/outdoor use
- The length of the cable is 35m

NAF1000 SCA/LC (2mm) HBBX 48SML 40m

- One end of the ready assembled cable is installed into a NAF1000 enclosure
- There is no need for other enclosure since it's not mentioned
- The connectors installed into NAF1000 enclosure are SC-APC
- The connectors at the other end are LC-UPC and are made of 2mm fiber. The fibers and connectors are inside a protective tube
- The cable is thin black 48-fiber indoor-/outdoor cable
- The length of the cable is 40m

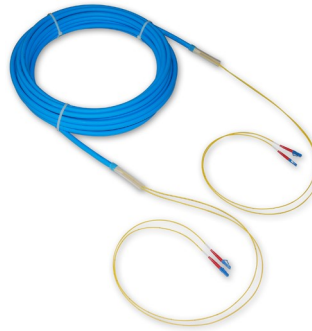


The Identification codes for the most common FXMMS cables



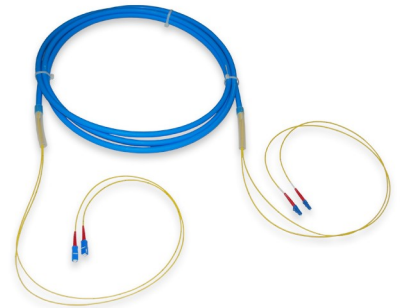
SC-UPC/SC-UPC FXMMS 2SMT

Product code	Product
7262176	SC/SC FXMMS 2SMT 10m
7264837	SC/SC FXMMS 2SMT 12m
7262177	SC/SC FXMMS 2SMT 15m
7262178	SC/SC FXMMS 2SMT 16m
7262179	SC/SC FXMMS 2SMT 20m
7262180	SC/SC FXMMS 2SMT 25m
7262181	SC/SC FXMMS 2SMT 30m
7262182	SC/SC FXMMS 2SMT 35m
7262183	SC/SC FXMMS 2SMT 40m
7262184	SC/SC FXMMS 2SMT 45m



LC-UPC/LC-UPC FXMMS 2SMT

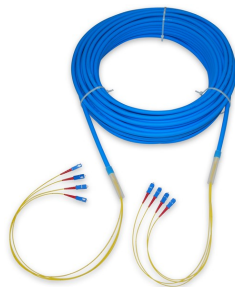
Product code	Product
7262218	LC/LC FXMMS 2SMT 10m
7264838	LC/LC FXMMS 2SMT 12m
7262219	LC/LC FXMMS 2SMT 15m
7262220	LC/LC FXMMS 2SMT 16m
7262221	LC/LC FXMMS 2SMT 20m
7262222	LC/LC FXMMS 2SMT 25m
7262223	LC/LC FXMMS 2SMT 30m
7262224	LC/LC FXMMS 2SMT 35m
7262225	LC/LC FXMMS 2SMT 40m
7262226	LC/LC FXMMS 2SMT 45m



SC-UPC/LC-UPC FXMMS 2SMT

Product code	Product
7262140	SC/LC FXMMS 2SMT 10m
7264836	SC/LC FXMMS 2SMT 12m
7262141	SC/LC FXMMS 2SMT 15m
7262142	SC/LC FXMMS 2SMT 16m
7262143	SC/LC FXMMS 2SMT 20m
7262144	SC/LC FXMMS 2SMT 25m
7262145	SC/LC FXMMS 2SMT 30m
7262146	SC/LC FXMMS 2SMT 35m
7262147	SC/LC FXMMS 2SMT 40m
7262148	SC/LC FXMMS 2SMT 45m

Ready assembled cables



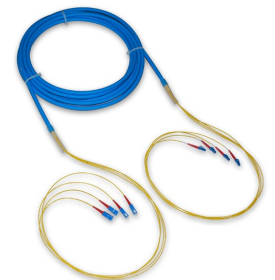
SC-UPC/SC-UPC FXMMS 4SMT

Product code	Product
7262185	SC/SC FXMMS 4SMT 10m
7262186	SC/SC FXMMS 4SMT 15m
7262187	SC/SC FXMMS 4SMT 16m
7262188	SC/SC FXMMS 4SMT 20m
7262189	SC/SC FXMMS 4SMT 25m
7262190	SC/SC FXMMS 4SMT 30m
7262191	SC/SC FXMMS 4SMT 35m
7262192	SC/SC FXMMS 4SMT 40m
7262193	SC/SC FXMMS 4SMT 45m



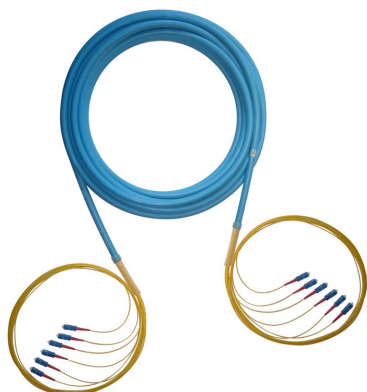
LC-UPC/LC-UPC FXMMS 4SMT

Product code	Product
7262227	LC/LC FXMMS 4SMT 10m
7262228	LC/LC FXMMS 4SMT 15m
7262229	LC/LC FXMMS 4SMT 16m
7262230	LC/LC FXMMS 4SMT 20m
7262231	LC/LC FXMMS 4SMT 25m
7262232	LC/LC FXMMS 4SMT 30m
7262233	LC/LC FXMMS 4SMT 35m
7262234	LC/LC FXMMS 4SMT 40m
7262235	LC/LC FXMMS 4SMT 45m



SC-UPC/LC-UPC FXMMS 4SMT

Product code	Product
7262149	SC/LC FXMMS 4SMT 10m
7262150	SC/LC FXMMS 4SMT 15m
7262151	SC/LC FXMMS 4SMT 16m
7262152	SC/LC FXMMS 4SMT 20m
7262153	SC/LC FXMMS 4SMT 25m
7262154	SC/LC FXMMS 4SMT 30m
7262155	SC/LC FXMMS 4SMT 35m
7262156	SC/LC FXMMS 4SMT 40m
7262157	SC/LC FXMMS 4SMT 45m



SC-UPC/SC-UPC FXMMS 6SMT



LC-UPC/LC-UPC FXMMS 6SMT



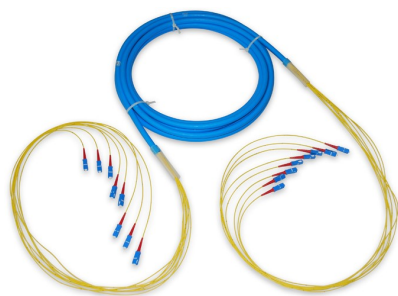
SC-UPC/LC-UPC FXMMS 6SMT

Product code	Product
7262200	SC/SC FXMMS 6SMT 10m
7262201	SC/SC FXMMS 6SMT 15m
7262202	SC/SC FXMMS 6SMT 16m
7262203	SC/SC FXMMS 6SMT 20m
7262204	SC/SC FXMMS 6SMT 25m
7262205	SC/SC FXMMS 6SMT 30m
7262206	SC/SC FXMMS 6SMT 35m

Product code	Product
7262236	LC/LC FXMMS 6SMT 10m
7262237	LC/LC FXMMS 6SMT 15m
7262238	LC/LC FXMMS 6SMT 16m
7262239	LC/LC FXMMS 6SMT 20m
7262240	LC/LC FXMMS 6SMT 25m
7262241	LC/LC FXMMS 6SMT 30m
7262242	LC/LC FXMMS 6SMT 35m

Product code	Product
7262158	SC/LC FXMMS 6SMT 10m
7262159	SC/LC FXMMS 6SMT 15m
7262160	SC/LC FXMMS 6SMT 16m
7262161	SC/LC FXMMS 6SMT 20m
7262162	SC/LC FXMMS 6SMT 25m
7262163	SC/LC FXMMS 6SMT 30m
7262164	SC/LC FXMMS 6SMT 35m

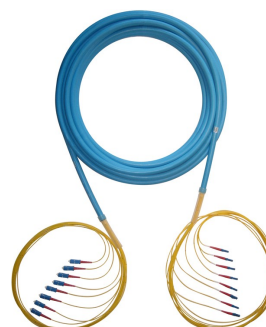
Ready assembled cables



SC-UPC/SC-UPC FXMMS 8SMT



LC-UPC/LC-UPC FXMMS 8SMT



SC-UPC/LC-UPC FXMMS 8SMT

Product code	Product
7262209	SC/SC FXMMS 8SMT 10m
7262210	SC/SC FXMMS 8SMT 15m
7262211	SC/SC FXMMS 8SMT 16m
7262212	SC/SC FXMMS 8SMT 20m
7262213	SC/SC FXMMS 8SMT 25m
7262214	SC/SC FXMMS 8SMT 30m
7262215	SC/SC FXMMS 8SMT 35m
7262216	SC/SC FXMMS 8SMT 40m
7262217	SC/SC FXMMS 8SMT 45m

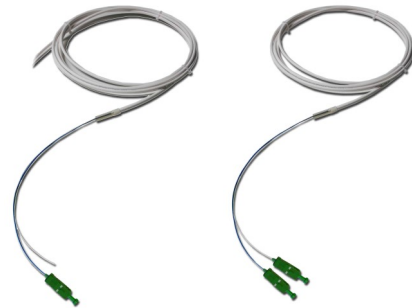
Product code	Product
7262245	LC/LC FXMMS 8SMT 10m
7262246	LC/LC FXMMS 8SMT 15m
7262247	LC/LC FXMMS 8SMT 16m
7262248	LC/LC FXMMS 8SMT 20m
7262249	LC/LC FXMMS 8SMT 25m
7262250	LC/LC FXMMS 8SMT 30m
7262251	LC/LC FXMMS 8SMT 35m
7262252	LC/LC FXMMS 8SMT 40m
7262253	LC/LC FXMMS 8SMT 45m

Product code	Product
7262167	SC/LC FXMMS 8SMT 10m
7262168	SC/LC FXMMS 8SMT 15m
7262169	SC/LC FXMMS 8SMT 16m
7262170	SC/LC FXMMS 8SMT 20m
7262171	SC/LC FXMMS 8SMT 25m
7262172	SC/LC FXMMS 8SMT 30m
7262173	SC/LC FXMMS 8SMT 35m
7262174	SC/LC FXMMS 8SMT 40m
7262175	SC/LC FXMMS 8SMT 45m

The Identification codes for FTMSU cables

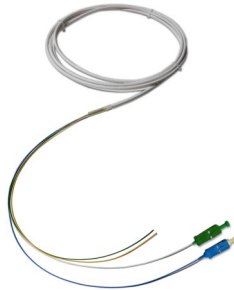


Product code	Product
7263200	SCA+SC/SCA+SC FTMSU 2SMT 10m
7263201	SCA+SC/SCA+SC FTMSU 2SMT 15m



Product code	Product
7263332	SCA/- FTMSU 1SMT 5m
7269397	SCA/- FTMSU 1SMT 10m
7263333	SCA/- FTMSU 1SMT 15m
7263334	SCA/- FTMSU 1SMT 30m
7269439	SCA/- FTMSU 2SMT Cca 15m
7269440	SCA/- FTMSU 2SMT Cca 30m

Ready assembled cables



Product code	Product
7269437	SC+SCA/- FTMSU 2SMT 5m
7269438	SC+SCA/- FTMSU 2SMT 10m



Product code	Product
7269496	SCA/LCA FTMSU 1SMT 0,5m
7269441	SCA/LCA FTMSU 1SMT 1,5m
7269442	SCA/LCA FTMSU 1SMT 5m



Product code	Product
7269280	LC/- FTMSU 2SMT 5m
7269281	LC/- FTMSU 2SMT 10m



Product code	Product
7263444	LCA/- FTMSU 1SMT 15m
7263445	LCA/- FTMSU 1SMT 30m
7269292	LCA/- FTMSU 2SMT 30m

FIBER+CAT6 READY ASEMBELED CABLES



Ready assembled cables

These cables are available in similar fashion like all fiber cables. Connectors for fibers and CAT6 are ready made on both ends or just at one end. One end can be installed into an enclosure in our factory.

The products can be manufactured in a fashion that leaves CAT6 connector uninstalled at one or both ends. The length of the cable depends on customer needs.

Hb-rasia 4LCA+RJ45

Product code	Product
7268488	Hb-rasia 4LCA+RJ45/- C6UTP+4SMT HF 20m
7268489	Hb-rasia 4LCA+RJ45/- C6UTP+4SMT HF 25m
7268490	Hb-rasia 4LCA+RJ45/- C6UTP+4SMT HF 30m
7268491	Hb-rasia 4LCA+RJ45/- C6UTP+4SMT HF 35m
7268492	Hb-rasia 4LCA+RJ45/- C6UTP+4SMT HF 40m
7268493	Hb-rasia 4LCA+RJ45/- C6UTP+4SMT HF 45m
7268494	Hb-rasia 4LCA+RJ45/- C6UTP+4SMT HF 50m
7268495	Hb-rasia 4LCA+RJ45/- C6UTP+4SMT HF 55m

Hb-rasia 4SCA+RJ45

Product code	Product
7268496	Hb-rasia 4SCA+RJ45/- C6UTP+4SMT HF 20m
7268497	Hb-rasia 4SCA+RJ45/- C6UTP+4SMT HF 25m
7268498	Hb-rasia 4SCA+RJ45/- C6UTP+4SMT HF 30m
7268499	Hb-rasia 4SCA+RJ45/- C6UTP+4SMT HF 35m
7263103	Hb-rasia 4SCA+RJ45/- C6UTP+4SMT HF 40m
7263102	Hb-rasia 4SCA+RJ45/- C6UTP+4SMT HF 45m
7263100	Hb-rasia 4SCA+RJ45/- C6UTP+4SMT HF 50m
7263101	Hb-rasia 4SCA+RJ45/- C6UTP+4SMT HF 55m

Sales and Technology:

Jussi Laine

+358 400 786 427

jussi.laine@naficon.fi

Heikki Rikkonen

+358 44 544 0702

heikki.rikkonen@naficon.fi

Office:

+358 020 835 1662

naficon@naficon.fi

Naficon Liitin Oy

Lahdentie 7 D

21660 Nauvo FINLAND

www.naficon.fi