

NAFICON

***NAF K-distribution
cabinets and splice
cabinets***



Naficon was established in 1994 and is specialized in products for Passive Optic Networks (PON). Naficon is located in Nauvo, in the archipelago of Turku. Over the past three decades we have established ourselves as one of the leading operators on the field of end-products for optical fiber networks in Finland. Quality, flexibility and understanding are the three words that describe best the way we operate. Using high-class materials, the newest production equipment and continuous development of skills are the reasons for maintaining good quality year in and year out.



In July 2015 we founded subsidiary in Dubai, United Arab Emirates. The name of the company is NFOM (Naficon Fiber Optic Manufacturing) LLC. NFOM manufactures similar products as we do in Finland using the same materials and production equipment. Certain products, like trunk cables for mobile masts and other cell sites, are still made from start to finish in Nauvo. The production in NFOM started in February 2016. In April 2017 NFOM quality management system got ISO 9001 quality certification.



As said our manufacturing plant in Finland is in Nauvo. We manufacture pigtails, patch cords and multifiber cables with connectors ready-made. Used cables are for indoor and outdoor applications according to customer needs. Beside those products we manufacture pre-terminated fiber panels for different purposes.



Besides comprehensive stock of our own products, we have all the essential PON products in stock. Adapters, splice protector sleeves, attenuators, splitters, CWDM etc. We have thousands of products in stock so even bigger deliveries within a day can be made.

We manufacture products with all the most common connectors: SC, LC, FC and ST. All of them can be polished with UPC (no angle) and SC, LC and FC connectors are available as APC connectors. APC connectors feature fiber end face that is polished at an 8-degree angle. Other ready-made connectors, such as MTP/MPO and E2000, can be supplied via our partners.

Flexibility, quality and understanding

- three words that describe Naficon's products and operations

NAF K0 distribution cabinets

- Material: hot-dip galvanized steel sheet 1.5 mm
- Colour options: RAL7008, RAL7024, RAL7035 and unpainted hot-dip galvanized
- Includes lock cover and latch for Abloy lock, condensation protection plate, mounting rails for attaching splice cabinets and connection points for attaching other cabinets.
- Meets the requirements of standard SFS 2533
- Can be delivered equipped with a yellow/black marker pole



NAF K0/850

- Product code [7268700](#)
- Measures 850 x 600 x 360 mm (HxWxD)



NAF K0/1200

- Product code [7268701](#)
- Measures 1200 x 600 x 360 mm (HxWxD)

NAF K0 stand

- Product code [7268702](#)
- Measures 1000 x 600 x 360 mm (HxWxD)
- Material: hot-dip galvanized steel sheet 2.0 mm
- Meets the requirements of standard SFS 2534
- Colour options: RAL7008, RAL7024, RAL7035 and unpainted hot-dip galvanized



NAF K0 distribution cabinets and stand

- Material: hot-dip galvanized steel sheet 1,5/2,0 mm
- Colour options: RAL7008, RAL7024, RAL7035 and unpainted hot-dip galvanized
- Includes lock cover and latch for Abloy lock, condensation protection plate, mounting rails for attaching splice cabinets and connection points for attaching other cabinets.
- Meets the requirements of standards SFS 2533 and SFS 2534
- Can be delivered equipped with a yellow/black marker pole



NAF K0/850 + stand

- Product code [7268703](#)
- Measures 1850 x 600 x 360 mm (HxWxD)

NAF K0/1200 + stand

- Product code [7268704](#)
- Measures 2200 x 600 x 360 mm (HxWxD)

NAF K1 distribution cabinets

- Material: hot-dip galvanized steel sheet 1.5 mm
- Colour options: RAL7008, RAL7024, RAL7035 and unpainted hot-dip galvanized
- Includes lock cover and latch for Abloy lock, condensation protection plate, mounting rails for attaching splice cabinets and connection points for attaching other cabinets.
- Meets the requirements of standard SFS 2533
- Can be delivered equipped with a yellow/black marker pole



NAF K1/850

- Product code [7268705](#)
- Measures 850 x 850 x 360 mm (HxWxD)



NAF K1/1200

- Product code [7268706](#)
- Measures 1200 x 850 x 360 mm (HxWxD)

NAF K1 stand

- Product code [7268707](#)
- Measures 1000 x 850 x 360 mm (HxWxD)
- Material: hot-dip galvanized steel sheet 2.0 mm
- Meets the requirements of standard SFS 2534
- Colour options: RAL7008, RAL7024, RAL7035 and unpainted hot-dip galvanized



NAF K1 distribution cabinets and stand

- Material: hot-dip galvanized steel sheet 1,5/2,0 mm
- Colour options: RAL7008, RAL7024, RAL7035 and unpainted hot-dip galvanized
- Includes lock cover and latch for Abloy lock, condensation protection plate, mounting rails for attaching splice cabinets and connection points for attaching other cabinets.
- Meets the requirements of standards SFS 2533 and SFS 2534
- Can be delivered equipped with a yellow/black marker pole



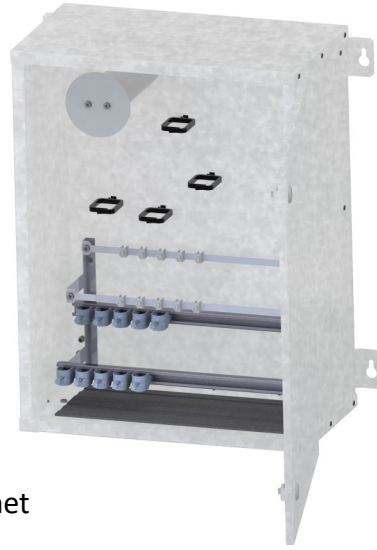
NAF K1/850 + stand

- Product code [7268708](#)
- Measures 1850 x 850 x 360 mm (HxWxD)

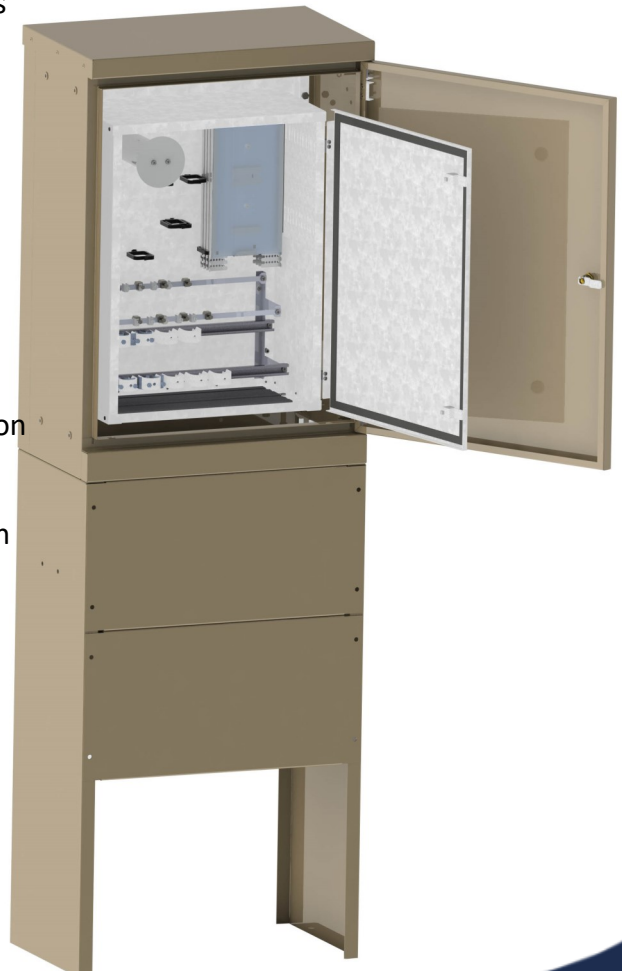
NAF K1/1200 + stand

- Product code [7268709](#)
- Measures 2200 x 850 x 360 mm (HxWxD)

NAF K0 and splice cabinet NAF 864



- Splice cabinet NAF 864
- Product code: [7269297](#)
- To be placed inside K0 or K1 distribution cabinet
- Supplied either separately or pre-installed into K0- or K1- cable distribution cabinet
- Can also be mounted directly on the wall
- Includes slots for 13 48-fiber splice trays or for nine 96-fiber splice trays
- Suitable for various direct buried cables and duct cables as well as microduct cables
- Can be used for mid span access
- Dimensions 600 x 450 x 250 mm (HxWxD), weight 19,5 kg
- Material: hot-dip galvanized steel sheet
- Dustproof construction
- The door can be removed during installation
- Splice cabinet NAF 864 installed inside K0/1200 distribution cabinet ith stand: [7269326](#)
- Splice cabinet NAF 864 installed inside K0/850 distribution cabinet ith stand: [7263442](#)

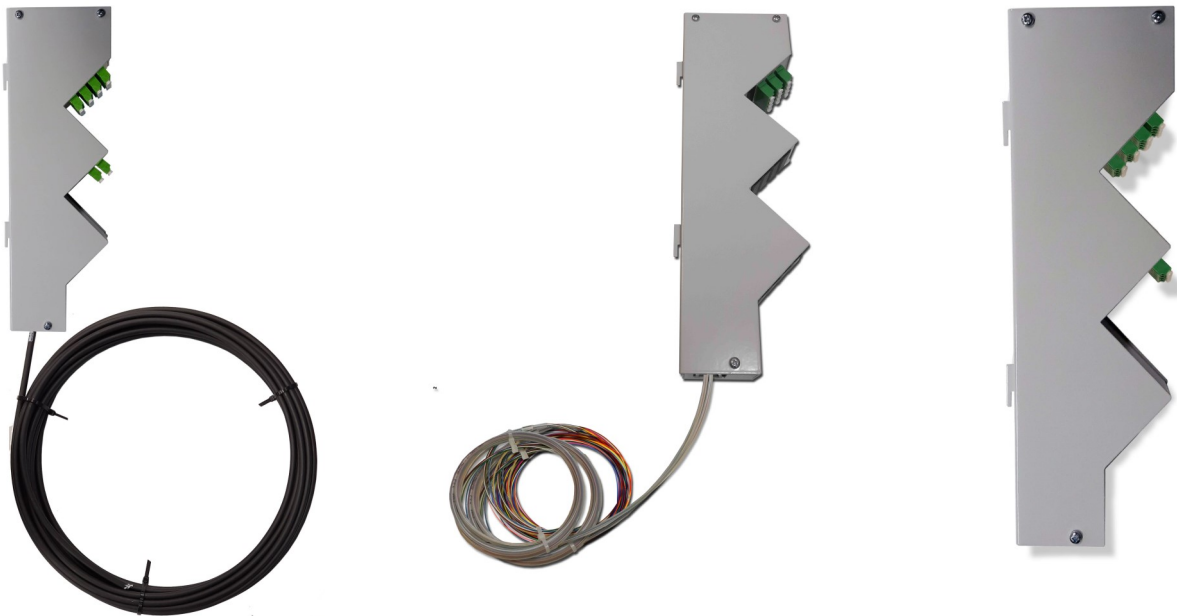


NAF K0 and NAF multi-cabinet



- NAF multi-cabinet [7268711](#)
- To be placed inside K0 or K1 distribution cabinet
- Supplied either separately or pre-installed into K0 or K1 distribution cabinet
- NAF multi-cabinet and K0/850 distribution cabinet with stand [7269473](#)
- Suitable for various direct buried cables and duct cables as well as microduct cables
- Microducts can be brought directly inside the splice cabinet
- Includes slots for 48-fiber splice trays and for 96-fiber splice trays
- The door can be removed during installation
- Dimensions 600 x 450 x 250 mm (HxWxD), weight 19,5 kg
- Material: hot-dip galvanized steel sheet
- Capacity:
 - * 17 pcs 48-fiber splice trays
 - * 12 pcs 96-fiber splice trays
 - * 98 pcs 7/3,5 mm microducts
 - * 16 pcs 14/10 mm microducts

Mini panels with hook brackets for splice cabinets



- Terminal or splitter module which is installed to a splice tray stand using hook brackets
- Mini panel [7269407](#)
- Mini panel LCA/- HBBX 12SML 5m, [7269408](#)
- Mini panel LCA/- HBBX 24SML 5m, [7269329](#)
 - A 24-fibre SM indoor/outdoor cable is installed in the terminal module, with 24 LC/APC connectors at one end and the other end is free for splicing. Cable length is 5m.
- Mini panel 1:8 LCA splitter module, [7269336](#)
- Mini panel 2x 1:8 LCA splitter module, [7269337](#)
- Mini panel 1:16 LCA splitter module, [7269338](#)
- Mini panel package, [7269396](#)
 - The package includes:
 - Mini panel LCA/- HBBX 24SML 5m, [7269329](#)
 - Mini panel 1:16 LCA splitter module, [7269338](#)
 - Splice tray 48, 2 pcs, [7264145](#)
- Mini panel LCA/- 12SMT 3,5m, [7269465](#)
- Mini panel LCA/- 24SMT 3,5m, [7269488](#)
- Mini panel LCA/- 48SMT 3,5m, [7269489](#)
- Mini panel 4SM+1:16 LCA, [7263455](#)

Splitter cases with hook brackets



- Product code [7269316](#)
 - * A PLC splitter, with a split ratio of 1:16, is installed in a splitter case. The fibers are in protective tubes. Com in its own tube and other fibers 8 pcs/tube. In the case, there are hook fasteners suitable for the splice tray holders. The length of the fibers is 3 m.
- Product code [7269317](#)
 - * A PLC splitter, with a split ratio of 1:32, is installed in a splitter case. The fibers are in protective tubes. Com in its own tube and other fibers 8 pcs/tube. In the case, there are hook fasteners suitable for the splice tray holders. The length of the fibers is 3 m.

NAF K1 and NAF1000 XC outdoor cabinet



- Product code: [7269309](#)
- Placed inside the K1 or K2 distribution cabinet.
- Delivered either separately or pre-installed in the distribution cabinet.
- The cabinet has been specially developed as a coupling cabinet for PON networks.
- Includes a rack for ODF1000 terminal and splitter panels, fiber guides, separate splice tray holder for 48 and 96-fiber splice trays, fastening and grounding rails for incoming cables underneath the splice trays and three wide cable glands with bristle at the bottom of the cabinet.
- The height of the rack is 16 U.
- Suitable for various direct buried cables and duct cables as well as microducts.
- Can be used for mid span access.
- Material: powder coated sheet steel
- Colour RAL 7035
- Dimensions 850 (H) x 740 (W) x 271 (D) mm
- Dustproof construction



Below are the different delivery options for the XC-cabinet:

NAF 19" XC outdoor cabinet



- Product code: [7268712](#)
- Placed inside the K1 or K2 distribution cabinet.
- Delivered either separately or pre-installed in the distribution cabinet.
- Includes a rack for 19" terminal and splitter panels, fiber guides, separate splice tray holder for 48 and 96-fiber splice trays, fastening and grounding rails for incoming cables underneath the splice trays and two wide cable glands with bristle at the bottom of the cabinet.
- The height of the rack is 10 U
- Suitable for various direct buried cables and duct cables as well as microducts.
- Material: powder coated sheet steel
- Colour RAL 7035
- Measures (HxWxD): 1025 x 766 x 273 mm
- Dustproof construction

NAF K1 ja 19" RK-ulkokaappi



- Product code: [7268715](#)
- NAF 19" XC outdoor cabinet installed inside K1/1200 distribution cabinet ([7268712](#), [7268706](#))



NAF K1 and XC-cabinets

NAF SLIM splice cabinet

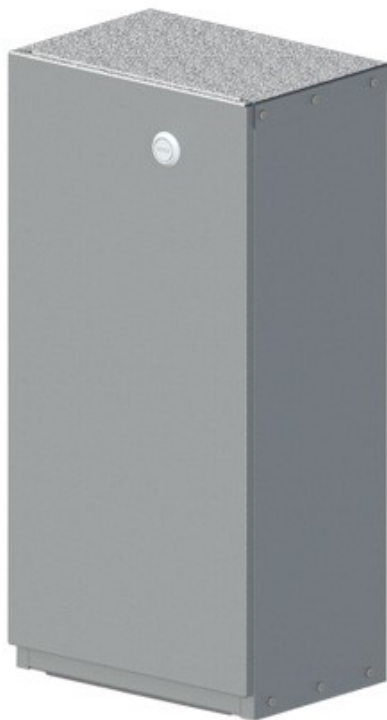
- NAF SLIM splice cabinet [7268710](#)
- A narrow outdoor cabinet with places for splice trays inside. The cabinet has side supports for splice trays.
- Suitable for various direct buried cables and duct cables as well as microducts.
- Suitable for splice trays with hook brackets (both 48-fiber and 96-fiber)
- Measures 1700x403x215 mm
- Weight 40,8 kg
- Colour options: RAL7008, RAL7024, RAL7035 and unpainted hot-dip galvanized
- Capacity:
 - * 9 pcs 48-fiber splice trays
 - * 6 pcs 96-fiber splice trays
- Can be delivered equipped with a yellow/black marker pole



NAF SLIM splice cabinet

Splice cabinet NAF Compact

- NAF Compact [7263464](#)
- NAF Compact is suitable for different direct buried cables, duct cables, microduct cables and microducts.
- NAF Compact is suitable for extending and branching different optical cables even in small outdoor cabinets.
- Is placed inside an outdoor cabinet.
- Includes slots for 10 48-fiber splice trays or for six 96-fiber splice trays.
- Cable glands with bristle are at the bottom of the cabinet.
- The door can be removed during installation
- External dimensions 500 x 250 x 170 mm (HxWxD)
- Material galvanized steel sheet
- Dustproof construction



Splice cabinet NAF Compact

Splice cabinet NAF Compact



Splice cabinet NAF Compact

Splice cabinet NAF 528

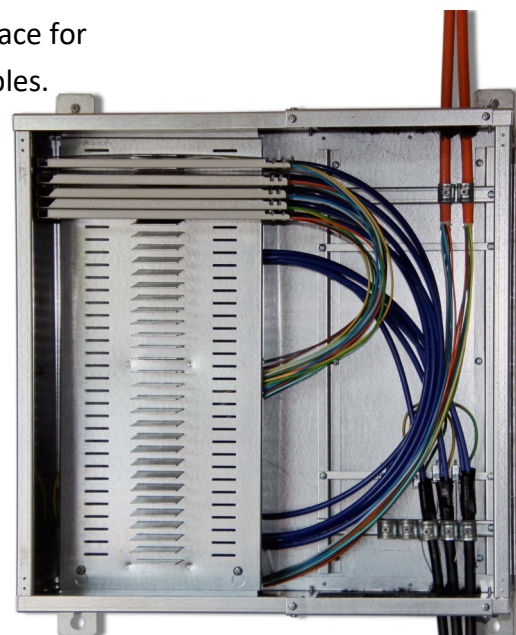


- Product code: [7269307](#)
- Splice cabinet NAF 528 is suitable for various direct buried cables, duct cables and microducts
- For indoor purposes or inside distribution cabinets
- Wall mounted
- There is room for 11 48-fiber splice trays or for 7 96-fiber splice trays.
- Cable glands with bristle can be changed between the upper and lower part of the cabinet as needed.
- The door can be removed during installation
- Dimensions 500 x 450 x 173 mm
- Material: powder coated sheet steel
- Dustproof construction



Indoor splice cabinet NAF 1584

- Product code: [7269306](#)
- NAF 1584 is suitable for jointing different cables and branching them inside IT area from outdoor cables to cables suitable for indoor installations.
- For indoor purposes
- Suitable for various direct buried cables and duct cables
- The dismantlable cable glands are at the top and bottom
- Dimensions 600 x 600 x 300 mm
- There is room for 33 48-fiber splice trays
- Behind the splice tray holder, there is a large space for fiber tubes. For both incoming and outgoing cables.
- Dustproof construction
- The door is removable for installation



NAF splice cabinets

Sales and Technology:

Jussi Laine

+358 400 786 427

jussi.laine@naficon.fi

Heikki Rikkonen

+358 44 544 0702

heikki.rikkonen@naficon.fi

Office:

+358 020 835 1662

naficon@naficon.fi

Naficon Liitin Oy

Lahdentie 7 D

21660 Nauvo FINLAND

www.naficon.fi